



Paribus™

What's New in Paribus version 1.4



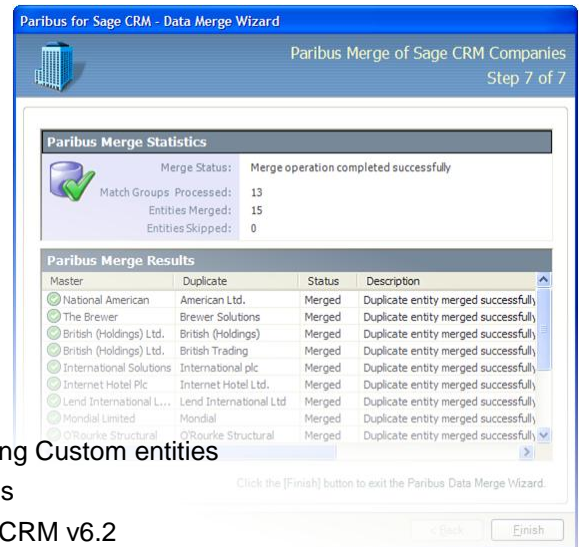
Paribus™ for Sage CRM

This Paribus release sees the initial release of the **Paribus for Sage CRM** plug-in. Paribus for Sage CRM is an extension of the main Paribus application, providing custom integration with the Sage CRM system.

Plug-in features include:

- Merging of duplicate Company and Person entities:
 - Merge all 1-to-1 related data
 - Merge all 1-to-many related data
 - Merge all custom related data
- Removal of duplicate entities after merge
- Auto-discovery of related entities (1-to-Many), including Custom entities
- Allows users to create additional Paribus Merge Rules
- Support for Sage CRM v6.1 (SP1 or later) and Sage CRM v6.2
- Updated set of Paribus definitions to map to Sage CRM databases

Please Note: An additional licence is required to use this plug-in



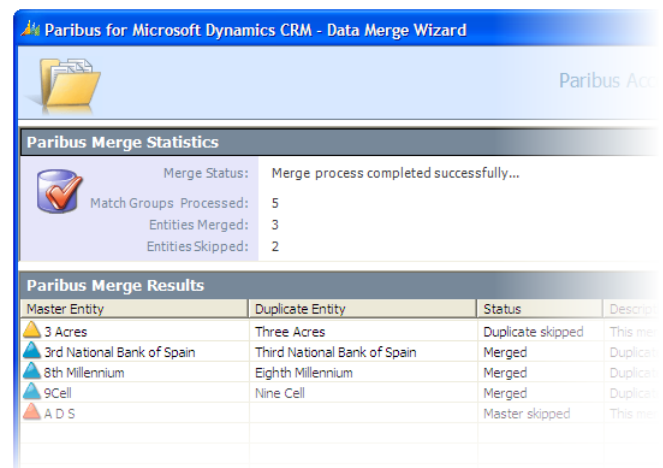
Paribus™ for Microsoft Dynamics CRM

Paribus version 1.4 also sees an update to the recently released **Paribus for Microsoft Dynamics CRM** plug-in.

Plug-in features include:

- Merge and purge duplicate Microsoft CRM Accounts, Contacts and Leads within Microsoft Dynamics CRM databases
- Compatible with CRM versions:
 - Version 3
 - Version 4
- Supports the following CRM Service types:
 - On-Premise (Local installation)
 - Internet Facing Deployment (Internet facing/hosted)
 - Microsoft CRM Online (Microsoft hosted)
- Includes a new set of Paribus definitions to map to Microsoft Dynamics CRM databases

Please Note: An additional licence is required to use this plug-in.



Also included in Paribus version 1.4...

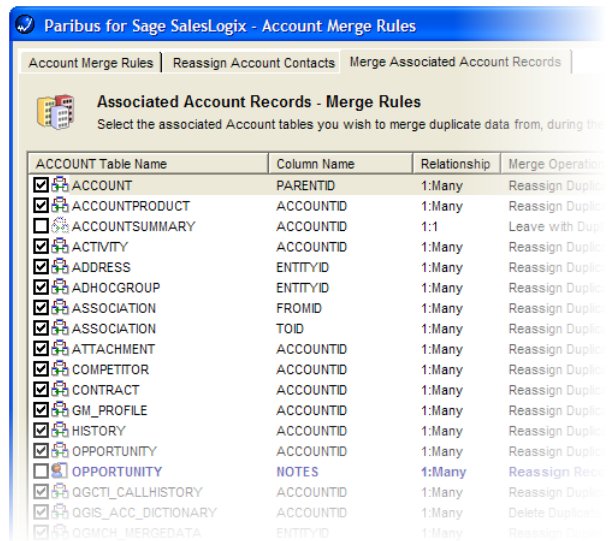


Paribus™ for Sage SalesLogix

This release also includes the following updates to the Paribus for Sage SalesLogix plug-in:

- New merge operations added for 1-to-many table relationships.
- Rephrasing of terminology within Account Merge Rules.
- Updated SalesLogix supporting Bundle.
- Updated components for the SalesLogix LAN client (new combined Paribus Entity Tab).
- Removal of SalesLogix version 5 (legacy) support.

A complete list of the features in the Paribus for Sage SalesLogix plug-in can be found within the plug-in user guide.



Paribus Match Results Exporter added

Paribus Match Results data can now be exported to the following formats:

- Text File – Export to text file with choice of formats (including .CSV)
- XML – Export to Extensible Mark-up Language (XML) format
- Microsoft Excel - Export to a Microsoft Excel (.XLS) document

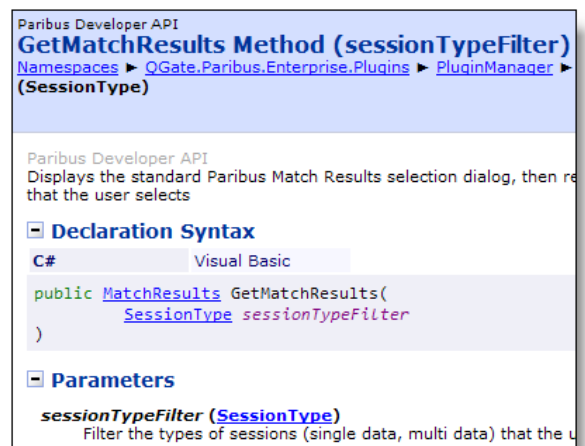


The Power to Plug-in - Paribus Software Development Kit (SDK)

Paribus now proudly provides a software developers kit (SDK) to enable easy integration of Paribus into other software data applications (such as CRM, ERP and Data Warehouses).

Based upon Microsoft .Net, technology the Paribus SDK uniquely enables you to build Paribus plug-ins that seamlessly integrate Paribus into your third-party applications and corporate data systems.

Harnessing the power of Paribus' data matching capability, Paribus plug-ins can access Paribus matched results to manage and manipulate data within third-party systems, (e.g. data de-duplication /consolidation).



Resolved some minor issues

- Please refer to the Paribus v1.4 Release Notes for details.

QGate Software Limited

D2 Fareham Heights, Standard Way

Fareham, Hampshire, PO16 8XT UK

Tel: +44 (0) 1329 222800 Fax: +44 (0) 1329 222801

Email: info@QGate.co.uk www.QGate.co.uk

